

ANNOUNCEMENTS

Are You Wearing a Name Tag?

To help us know one another better, we ask everyone to please wear a name tag. They can be found in the sitting area just inside the Adams Ave entrance. New name tags have been prepared for all church members.

We also have peel and stick name tags available!

Annual Meeting of the Congregation of First Presbyterian Church of Kirkwood

SUNDAY, FEBRUARY 25, 2024

FOLLOWING THE 11:00AM WORSHIP SERVICE

Pursuant to the Form of Government G-1.0502, the Session has called the Annual Meeting of the Congregation following the 11:00 a.m. Worship Service on Sunday, February 25, 2024 for any business that is appropriate.

This meeting will be held in person and by Zoom.

By Order of the Session

Lisa K. Ward

Clerk of Session

Adult Sunday School

Our **Adult Sunday School Class meets at 10:00 a.m. on Sundays in room 29**. This class will be taught by the members of the class using curriculum from the *Thoughtful Christian*. The subjects will vary from Bible study to current issues. All adults are welcome!

UPCOMING BUDGET MEETING

Come on Sunday, February 18th at 10 a.m. and meet with fellow church members who serve on the Finance, Operations, and Stewardship Committee, and learn about the 2024 church budget adopted by Session this past December. Held in the Fellowship Hall, this gathering is an opportunity to talk about/ask your questions concerning the challenges and possibilities surrounding the 2024 budget.

Upcoming Con Spirito Concert

Join us TOMORROW NIGHT at 7:00 p.m. for the St Olaf College Choir concert! We are very fortunate to host the top college touring choir in the country. Tickets are required for this event and may be purchased at the door, however, we cannot guarantee how many will be available. Doors will open at 6:30 p.m. for this performance.



Ash Wednesday & Lenten Concert Series Opportunities

Embrace the sacred season of Lent with us! Check out the upcoming events and opportunities listed below. Keep an eye out for our full Lent 2024 schedule, coming soon in our announcements, newsletter, and on our website. Join us for a meaningful journey and deepen your faith!

Ash Wednesday – February 14

- **8:15-9:00 a.m.** Drive-through ash distribution in the parking lot
- **12:30 p.m.** Service of Worship in the Chapel
- **7:00 p.m.** Service of Worship in the Chapel

The Tree of Life Chapel Lenten Recital Series

Join us for half-hour concerts every Friday at noon in the Tree of Life Chapel. All concerts are free, family friendly, and wheelchair accessible. Dress code is casual.

- **February 16** – Gateway Flute Quartet
- **February 23** – *Handel Celebration*: We celebrate the 338th birthday of GF Handel with music for strings, harpsichord, and voice, featuring Debra Hillabrand, soloist.

Volunteers Needed for Hospitality and First Pres Café

We need hosts, bakers and contributors of snacks to help keep First Pres Café up and running! Thank you for your generosity of time, talent, and hospitality. Sign up here: <https://bit.ly/firstprescafe>.

Additionally, we are looking for **Hospitality Committee volunteers** to help with other events at church. If you have any questions, please contact Kristen McSwain at klmcswain@me.com.



Spiritual Formation Group

*"We are not human beings having a spiritual experience.
We are spiritual beings having a human experience."
(Pierre Teilhard de Chardin)*

Our Spiritual Formation group gathers monthly to read together and reflect on aspects of our spirituality. We read and reflect on brief articles pertaining to the spiritual life; pausing periodically to reflect on and discuss words, phrases and ideas that stand out to us. We meet remotely via Google Meet on the 2nd Sunday of each month from 9-10:00 a.m. For more info, or to receive the meeting link, contact Tom Edelstein at Tedelstein@att.net.

Metropolitan Orchestra of St. Louis

Join us on Sunday, February 18th, at 7:00 p.m.
Tickets are available at the door, or visit www.moslmusic.org.

| | |
|---|------------------------|
| <i>A Midwinter Night's Dream:</i> | Ticket Prices: |
| TCHAIKOVSKY Overture-Fantasy Romeo & Juliet; | GENERAL ADMISSION \$20 |
| SAINT-SAËNS Cello Concerto No. 1; | SENIORS 60+ \$15 |
| FAURÉ Suite from Pelleas and Melisande | STUDENTS \$5 |
| MENDELSSOHN Suite from <i>A Midsummer Night's Dream</i> | |

Christian Concerns: February 2024

Betsy Solomon will be in the Fireplace Room at 9 a.m. each week in February to lead her series about African American Artists. The class will also be available by Zoom for those at home. We look forward to Betsy's presentations and hope to see you on Sunday mornings. Contact Ann if you have any questions at ann.willie@hotmail.com.

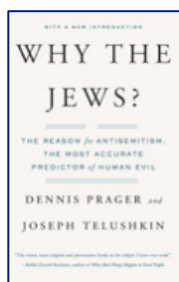
Classes feature African American Artists for Black History Month:

- **February 18** - Robert S. Duncanson and Edward Mitchell Bannister: 19th Century Painters
- **February 25** - Horace Pippin: American, Modern

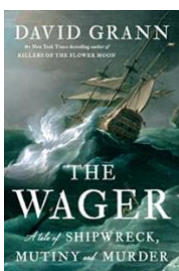
[Preschool Registration is Open NOW](#)

Registration opened on February 1st for our Children's Center! Secure your spot for your little ones ages 2-5. Church members and their families receive priority registration. We offer part-time preschool and kids' day out programs with flexible schedules to meet the needs of your family. Core hours are from 9:00-11:45 a.m., and extended hours are available. Our program features free and directed play activities aligned with the Missouri Early Learning Standards. Visit <https://firstpreschildrenscenter.com> or, contact us at childrenscenter@kirkwoodpres.org or 314-965-4028.

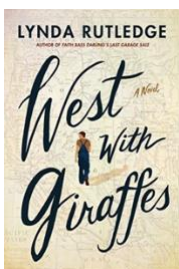
[Book Clubs](#)



Tuesday Book Club will continue discussing *Why the Jews?: The Reason for Antisemitism, the Most Accurate Predictor of Human Evil*, by Dennis Prager and Joseph Telushkin. Our group meets weekly on Tuesday mornings from 10:00-11:00 a.m. in the Fireplace Room. All are welcome to join the lively discussions. Contact kochkarenp@gmail.com with any questions.



History Book Group will meet at 10:30 a.m., Thursday, February 22nd at church to talk about *The Wager: A Tale of Shipwreck, Mutiny and Murder* by David Grann. For more info, please contact Don Lewis at donlewis610@gmail.com or Carlin Scanlan at ccscanlan@swbell.net.



Wednesday Book Club will meet on February 28th at 1:30 p.m. over Zoom. We will be discussing *West with Giraffes: A Novel* by Lynda Rutledge. This is based on a true story of the cross-country road trip America's first giraffes took in 1938. Please contact julia@abreu.net for more information.

[How to Give Online](#)

Give online with a onetime gift or set up reoccurring payments and pay with ACH direct from your checking account, via credit card, or using GooglePay.

Go to <https://www.shelbygiving.com/app/giving/kirkwoodpres> and follow the prompts, text GIVE to 314-293-4922, or scan the QR code to go directly our giving portal. Questions? Reach out to accounting@kirkwoodpres.org.



FIRST PRESBYTERIAN CHURCH OF
KIRKWOOD

